



Leadership and Innovation Within the Field of Rice

Early-Season Weed Control Is The Foundation Of A Successful Crop **Dr. Brian Ottis**

With all the news around herbicide resistance and the elaborate ways to combat it, we may have lost sight on good, old-fashioned weed control programs. Fortunately for rice, herbicide resistance pales in magnitude and scale to row crops in the South, but should weigh heavily on your weed control decisions this spring. Hopefully we've all learned what can happen if we rely too heavily on one herbicide mode of action for too long. It may be that some of the oldest, most proven herbicides provide the best weed control on your farm. Now is a good time to consider those 'old' herbicides in your crop plan to mix up the chemistry and keep the weeds guessing.

Thiobencarb is a chemical I grew up with on our rice farm. It was the foundation of all of our weed control programs for years. After Command came along, thiobencarb got pushed out of the way, but now it's making a comeback, of sorts. Thiobencarb, better known as Bolero, or also an active ingredient in RiceBeaux, is a tried and true pre-emergence rice herbicide. To my knowledge, I'm not aware of any weed resistance issues with thiobencarb and it offers a mode of action unique to the rice world. Thiobencarb can be used as a standalone delayed pre-emergence chemical, but I've always seen the best results when it's included in a tank mix with propanil, Facet, or other postemergence herbicides.

Speaking of propanil, there is another rice herbicide that has been somewhat forgotten over the last decade. Since the explosion of ALS-inhibiting herbicides, propanil has been somewhat pushed to the back burner as well. Although there are several documented cases of propanil-resistant barnyardgrass, propanil is still a good herbicide and offers another unique mode of action. It's compatible with nearly all other rice herbicides and provides excellent control of small broadleaf weeds. In fact, thinking back to my former small-plot testing days, Command followed by propanil was about the best conventional herbicide program we evaluated year in, year out. On the CLEARFIELD side, propanil is an excellent addition to pick up those pesky broadleaf weeds that Newpath may miss, or only suppress. A few examples would be eclipta, jointvetch, and coffeebean. Propanil does a great job on all of these if sprayed when they are small.

When planning for your 2011 weed control programs, take notes as to what worked last year and the year before, and then do something slightly different. By no means am I suggesting abandoning what works, but rather suggesting you be mindful of the mixture of modes of action you're using and make sure you are constantly changing things up in order to keep the weeds on their toes. If you equate your annual weed control program to warfare, it may give you a little more perspective. For example, and to steal a quote from *The Art of War*, by Sun Tzu, consider this, "...if you know your enemies and know yourself, you can win a hundred battles without a single loss. If you only know yourself, but not your opponent, you may win or you may lose..." (Loosely interpreted, you never know when your old standby weed control program may come up snake eyes).

- Remember seed that is eligible for return must be returned by June 15th.

- To sign up for the RiceTec podcast, send an email to ricereport@ricetec.com

- Remember to follow the guidelines set forth in Clearfield stewardship agreements.

Factors That Can Affect Stand Establishment

Jeff Branson

Several factors contribute to the yield potential of any rice field, and stand establishment is certainly one of the most important; mainly because it is hard to harvest what isn't there. Seed treatments, seeding date and environmental conditions all play key roles in determining the final plant population. Seed treatments can make the difference in achieving optimum plant populations in adverse weather conditions. That's why all RiceTec hybrids are treated with Zinc, as well as, broad-spectrum multiple fungicides combined with Release to enhance early growth and provide protection that is crucial to ensuring an adequate plant population.

The other two factors listed above can also significantly reduce stand density; however, certain steps can be taken to minimize their effects. Data gathered by several universities across multiple years have shown that the earlier you plant rice the greater the yield potential. An early seeding date is important; however, there is a big difference between planting early, and planting so early that you jeopardize stand establishment due to environmental factors beyond your control. RiceTec recommends certain planting dates depending on your geographical location. RiceTec has an excellent stand guarantee program, but will only provide seed in replant situations where the planting date guidelines were followed. If you have to replant your potential profits are significantly reduced from the costs associated with replanting. It's important to remember that there are more costs associated with replanting than the cost of the seed.

Environmental conditions following planting can impact plant populations as well. I know that using the word "flush" on many farms is prohibited, but in many situations flushing can solve a whole host of problems. It is the only environmental aspect of stand establishment that you can control. Inadequate moisture following germination combined with the decision not to flush has two outcomes, and both cost more money per acre than flushing. The first is uneven emergence, which can lead to maturity dates that can be more than a week apart. This leads to having multiple growth stages in the same field and management decisions are now based on only part of the field. Milling yields are also affected by uneven maturity as well. The second outcome is having to replant because the seed dried out or the plant could not get to the soil surface before leafing out underground as seen in photograph above.



Where stand establishment is a concern, flushing in most cases will increase plants per square foot by 2 or 3 plants. Then you may have 5 to 8 plants per square ft. instead of 2 to 5 plants. Flushing is an added expense and takes time when there are not enough hours in the day to get everything done, but don't risk your stand by deciding not to flush.

Reminder on Stand Guarantee Program

Van McNeely

The RiceTec Hybrid Rice stand guarantee program is designed to provide RiceTec seed customers replant seed in the event a customer does not get an adequate initial stand (as defined below) on his/her RiceTec hybrid rice acreage.

Eligibility and Limitations:

- Customer orders and receives seed from an authorized RiceTec Service Partner location.
- Customer plants during the recommended time period for the area (not before March 15th for the Gulf Coast and April 1st for the Mid-South) and follows RiceTec recommendations regarding:
 - Planting rates
 - Seedbed preparation
 - Planting methods
 - Flushing or fertilizing to enhance seed germination and stand establishment opportunities under difficult soil and/or environmental conditions.
- Customer allows inspection of any "concern" fields by RiceTec Technical Services Representative to assess plant stand prior to taking any action
- Customer agrees that RiceTec will be the sole party to determine the adequacy of the existing plant stand.
- For stand concerns not related to seed quality but rather due to "Acts of God" e.g. flooding, RiceTec will offer replant seed (subject to availability) at 30% of the initial purchase price.

Early Season 2011

- RiceTec hybrid rice that is not drill-seeded and qualifies for replant will be supplied at 50% of the initial purchase price.
An additional requirement for eligibility of water-seeded RiceTec hybrid rice is that the seed is presoaked for a minimum of 24 hours before seeding.
- When replant is determined to be necessary by RiceTec, only replant seed will be provided as a remedy.
- There will be no refunds or crediting of customer or Service Partner accounts.
- Replant seed will not be provided to **customers with unpaid seed balances**.
- Replant seed will not be provided for fields with pre-existing field conditions, including but not limited to:
Salt intrusion, Lack of water availability sufficient to flush/flood field
- RiceTec may make hybrid substitution for replant seed based upon seed availability.

Return Unused RiceTec Seed to Your Service Partner

Chris Tilley

As a reminder, we are completely sold out of hybrid seed for 2011 plantings. There are still growers in all areas that are looking for hybrids to plant. With this in mind, we encourage our customers to return all unused Spring Program seed (overtreated seed will not be accepted) to their Service Partner (where the seed was picked up) as soon as possible in order to help growers who are still in need. Fall Program seed is not returnable to RiceTec, but once planting is done, please call your RiceTec representative and Service Partner to let them know if you have any unused seed. Although Fall Program seed is not returnable, we do our best to help move leftover seed via customer-to-customer transactions until planting is done in all areas. A couple reminders on the return program:

- Spring Program seed is returnable, up to 10% of what was purchased in Spring Program, in unopened paper bags and/or MB that are in good, re-sellable condition
- Seed must be returned to the Service Partner location where it was picked up **NO LATER than June 15th**, 2011 to be eligible for refund
- Returns made between June 16th and June 24th, 2011 will be assessed a 15% restocking fee of the original purchase price
- After June 24th, **no returns will be accepted**
- In order to help track returns and issue credits, a Return Ticket must be completely filled out and signed by the customer and the Service Partner at time of return. All returns tickets must be sent to RiceTec Customer Service to receive credit for your seed.

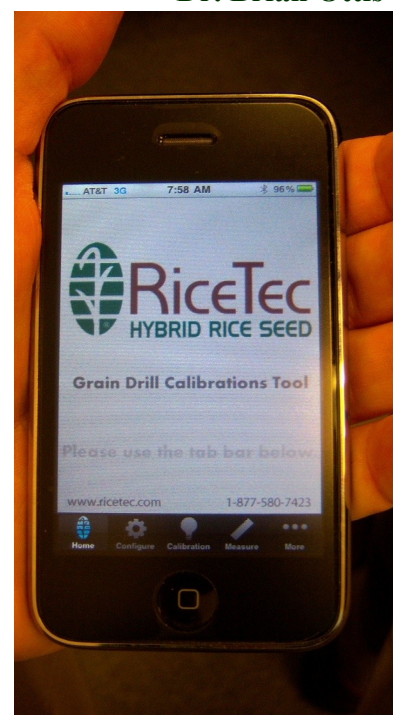
New iPhone® App Ready

Dr. Brian Ottis

RiceTec has launched the first-ever grain drill calibration mobile application, which is now available free for download from iTunes® or the App Store® for the iPhone®, iPod Touch® and iPad®. Developed specifically for RiceTec, the app assists rice growers in calibrating their grain drills to plant RiceTec Hybrid Rice Seed.

The iPhone® app, an exact replica of the grain drill calibration feature on RiceTec's website, is customizable to a grower's specific situation. It allows a grower to identify his model of grain drill, which automatically calculates the row spacing, particular RiceTec Hybrid Rice Seed Product and other pertinent details. Once all the information is entered, the grower simply clicks on the "Calibration" tab and the app provides the grower with RiceTec's recommended seeding rate to help ensure a successful crop. The tool also shows contact information for RiceTec's technical service reps and helpful photos for proper measurement of seed metering cogs to assist you in precise calibration.

This free mobile app is one more way RiceTec provides the highest-quality technical support to rice growers. Upgrades will be available to make the app beneficial to the user year round. Download Version 1.2 today!





RiceTec, Inc.

**P.O. Box 1305
1925 FM 2917
Alvin, TX 77511**

**15847 Highway 1
Harrisburg, AR 72432**

**877-580-7423
Fax 877-588-7423**

**RiceTec Newsletter
Early Season 2011**

- **Early-Season Weed Control Is The Foundation Of A Successful Crop**
- **Factors That Can Affect Stand Establishment**
- **Reminder on Stand Guarantee Program**
- **Return Unused RiceTec Seed To Your Service Partner**
- **New iPhone® App Ready**

RiceTec Service Contacts

Technical Services

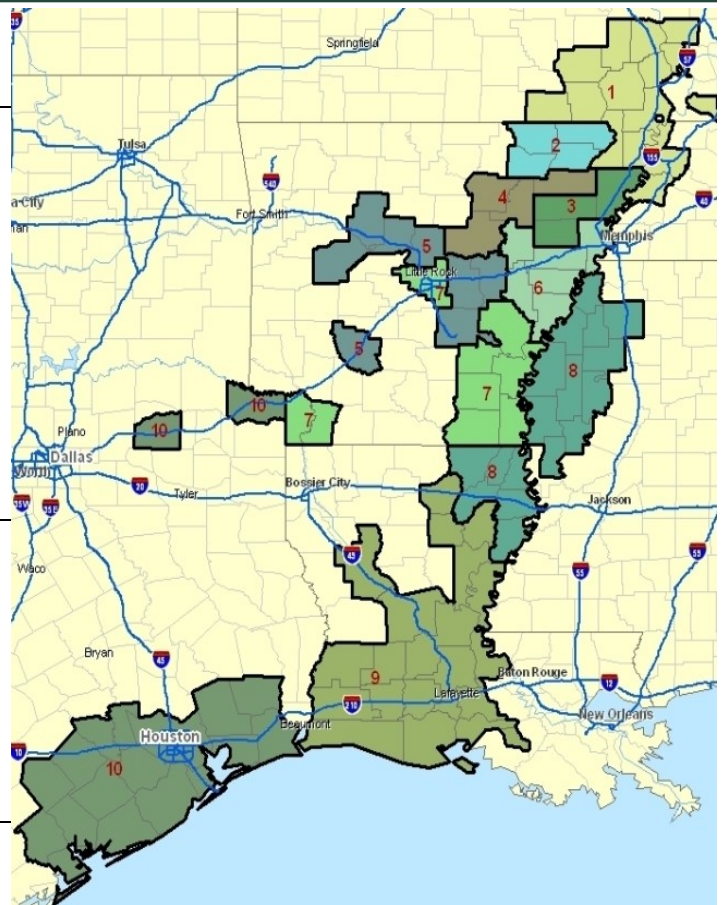
District 1	Barry Barnett	870-273-4988
District 2	Steven Gann	870-243-4703
District 3	Kurt Johns	870-243-4696
District 4	William Hutchens	870-273-9291
District 5	Whitney Jones	501-516-6904
District 6	Garrison Hardke	501-772-1715
District 7	Jeff Branson	870-578-8436
District 8	Jay Burchfield	662-402-2781
District 9	Cullen Minter	337-499-6498
District 10	Derrol Grymes	281-381-9371

Sales

Districts 1 - 2	DJ Shipman	870-273-9286
Districts 3 - 4	Brian Graf	870-243-2603
Districts 5 - 6	Jeff Reeves	870-919-6944
District 7	Wes Long	870-830-0160
District 8	Jeff Mosley	662-719-1034
District 9	Mike Worthington	337-263-4297
District 10	Mark Spilman	281-389-3527

Customer Service

Toll-free	Rebecca Wright	877-580-7423
-----------	----------------	--------------



Email addresses for RiceTec representatives available at www.RiceTec.com

