



People Dedicated to the Field of Rice

HARVEST 2010

Published for the customers of RiceTec, Inc.

HARVEST PLANNING CRITICAL IN 2010

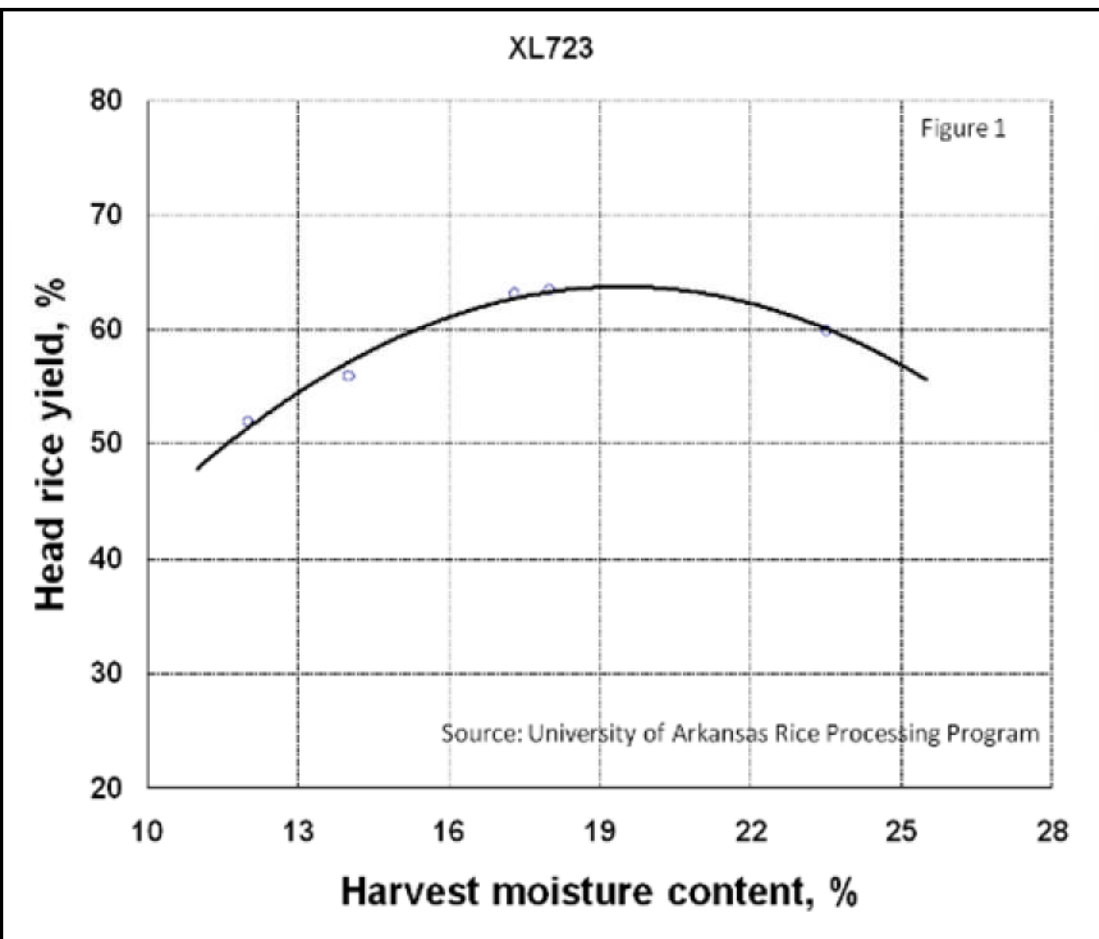
Brian Ottis

As we begin the 2010 rice harvest, stress levels will begin to rise across the southern rice belt. As is always the case, harvest never goes as planned because mother nature and breakdowns always tend to throw us a curve ball that force us to make hasty, yet important decisions during harvest. Below are a few points to consider when planning your approach to harvest this year.

The record acreage, accumulation of heat units, and early, simultaneous planting of 2010 has put this potentially large crop on track to come out of the field at nearly the same time across the rice belt. Many later planted fields have caught up with earlier-planted rice, which will put pressure on growers to determine the optimum order of harvest. When considering your harvest approach, plan to harvest your hybrid fields first and in the following order of increasing grain retention to maximize returns:

XL723 → CL XP746 → CF Hybrid Rice Blend → CL XL729 → Standard Hybrid Rice Blend → CL XL745

Another very important factor to consider along with harvest order is harvesting at the proper moisture content. Because so much rice will be ready for harvest at the same time, it will be difficult to harvest all your fields at the optimum moisture content, but bear in mind its importance. Below is a graph that depicts the effect of harvest moisture content on the whole milling quality of XL723 (Figure 1).



•To sign up for the RiceTec podcast, email Dr. Brian Ottis at bottis@ricetec.com

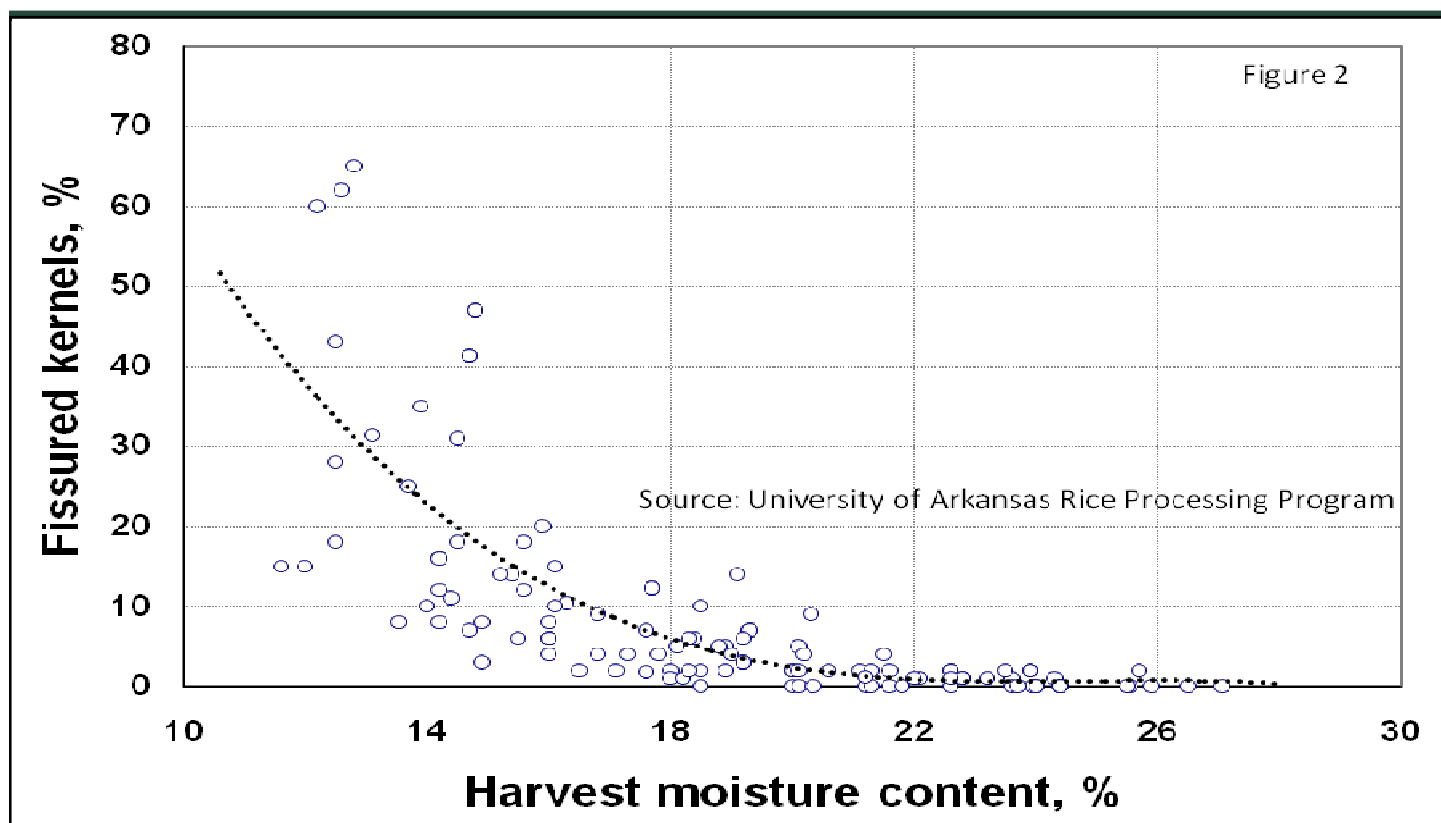
•Remember to check our website frequently for updates, information and details on programs.



Also available on our website: WWW.RICETEC.COM



Harvest 2010



When rice is harvested too green, whole kernel milling quality can suffer due to the number of immature kernels in the sample. When rice is too dry, whole kernel milling quality tends to decrease due to kernel fissuring (Figure 2). Fissured kernels will break during the milling process, ultimately reducing whole kernel milling yields and the milling premium that goes back in your pocket. Previous research conducted by University of Arkansas Rice Processing Program has shown that when considering drying charges for commercial dryers in Arkansas, the average optimum harvest moisture content for long grain rice is 18.7%. These data fall directly in line with RiceTec's harvest moisture recommendation of 18-20%.

RiceTec's Product Line Up For 2011

Jeff Branson

CLEARFIELD

- **CLEARFIELD XL729** – Since its commercial release in 2007, CLEARFIELD XL729 has taken the yield regime of hybrid rice to the next level. CLEARFIELD XL729 has a yield advantage of 21% - 34% over CLEARFIELD varieties.
- **CLEARFIELD XL745** – CLEARFIELD XL745 brings an increased level of performance and improved grain retention to the CLEARFIELD hybrid market. It offers an expected yield advantage of 3% - 5% over current CLEARFIELD hybrids.
- **CLEARFIELD XP756** — This new CLEARFIELD hybrid is a midseason hybrid that is comparable to Wells in maturity. This hybrid will allow harvest to be spread out more evenly due to later maturity. Grain retention with CL XP756 is comparable to standard varieties.
- **CF Hybrid Rice Blend** – This product is a blend of CLEARFIELD XL729 and CLEARFIELD XL745. This product provides comparable yields to CLEARFIELD XL729 and CLEARFIELD XL745 planted alone.

Traditional (Non-CLEARFIELD)

- **XL723** – As the proven traditional hybrid released in 2005, XL723 offers a 21% - 27% grain yield advantage over commonly-grown rice varieties and above average straw strength. Maturing about five days earlier than most other rice varieties, XL723 is an excellent option to be double-cropped behind wheat and in furrow-irrigated rice.
- **XP754** — This new conventional is a midseason hybrid that is comparable to Wells in maturity. Yields with XP754 have shown to be 10 to 15% greater than that of XL723. This hybrid will allow harvest to be spread out more evenly due to later maturity. Grain retention with XP754 is comparable to standard varieties.
- **XP753** — This new hybrid provides early maturity that is 1 day earlier than XL723 at 50% HD. Plant height and straw strength are similar to XL723. Yields are significantly greater than that of XL723. Grain retention with XP754 is greater than that of CL XL745.

Local Tours of Commercial Strip Trials Available

Local field tours and gatherings among hybrid rice growers and service partners are being held in your area. At these gatherings, farmers and service partners will have the opportunity to view and learn more about new RiceTec hybrids and interact with your local sales manager and technical services representative. To find out more information about a tour or to get more information about a strip trial in your area, contact your local technical services representative, or call our customer service line toll-free at 877.580.7423.

RICETEC HYBRID RICE - OPTIONS FOR DIVERSITY



FIELD TOURS ON COVERED TRAILERS RAIN OR SHINE

- Field Tour Topics:
•New RiceTec Product Development
•Irrigation Options
•Hybrid Rice Management Practices
•Seeding Rate/Seed Quality Enhancements

Make your reservations now to tour RiceTec's hybrid research facility and field trials in Harrisburg, Arkansas, on August 12. You'll see for yourself all the options you have when you grow RiceTec hybrid rice.

7:30.....Registration
8:30.....First field tour begins
10:30.....Last field tour begins
Laboratory tours available upon request
11:30.....Lunch

EARLY REGISTRATION
Name:
Company:
Address:
City: State: ZIP:
Phone: Cell: Fax:
E-mail:
Please circle your preferred method of communication:
Mail Phone E-mail



Visit RiceTec.com to complete the online registration. You may also fax this registration form to 870-578-3341 or call Marya Langford at 870-578-1800 to register by phone.



RiceTec, Inc.

**P.O. Box 1305
1925 FM 2917
Alvin, TX 77511**

**15847 Highway 1
Harrisburg, AR 72432**

**877-580-7423
Fax 877-588-7423**

**RiceTec Newsletter
Harvest 2010**

- Harvest Planning Critical in 2010
- RiceTec's Product Line Up For 2011
- Local Tours of Commercial Strip Trials Available
- RiceTec Field Day

RiceTec Service Contacts

Technical Services

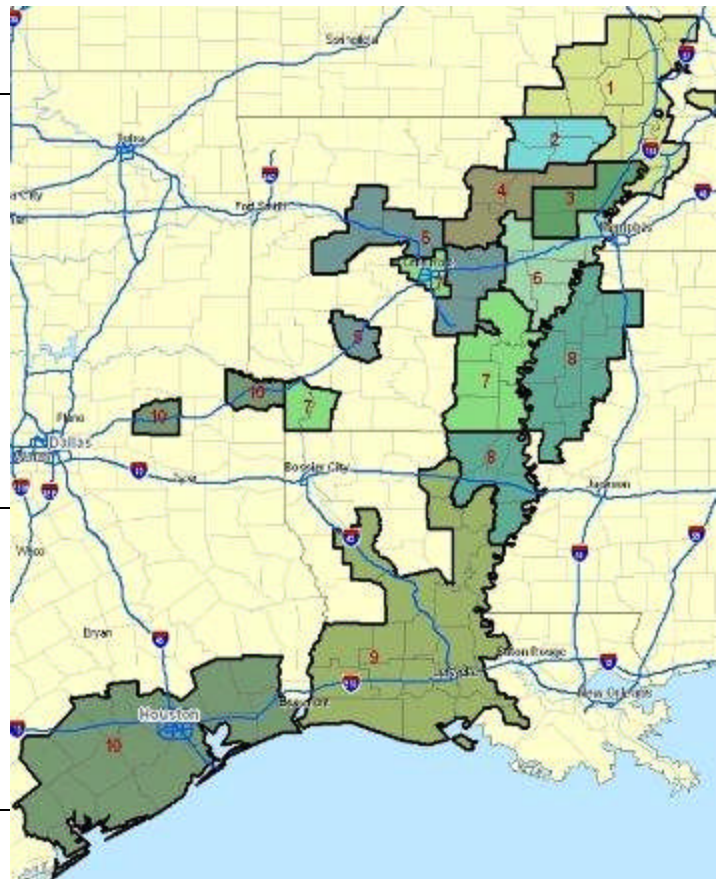
District 1	Barry Barnett	870-273-4988
District 2	DJ Shipman	870-273-9286
District 3	Kurt Johns	870-243-4696
District 4	William Hutchens	870-273-9291
District 5	Whitney Jones	501-516-6904
District 6	Garrison Hardke	501-772-1715
District 7	Jeff Branson	870-578-8436
District 8	Jay Burchfield	662-402-2781
District 9	Cullen Minter	337-499-6498
District 10	Derrol Grymes	281-381-9371

Sales

Districts 1 - 2	Brian Graf	870-243-2603
Districts 3 - 4	Bill Midkiff	870-273-8221
Districts 5 - 6	Jeff Reeves	870-919-6944
Districts 7	Wes Long	870-830-0160
Districts 8	Jeff Mosley	662-719-1034
Districts 9	Mike Worthington	337-263-4297
Districts 10	Mark Spilman	281-389-3527

Customer Service

Chris Tilley	877-580-7423
--------------	--------------



Email addresses for RiceTec representatives available at www.RiceTec.com