

2011 Post Harvest

Published for the customers of RiceTec, Inc.



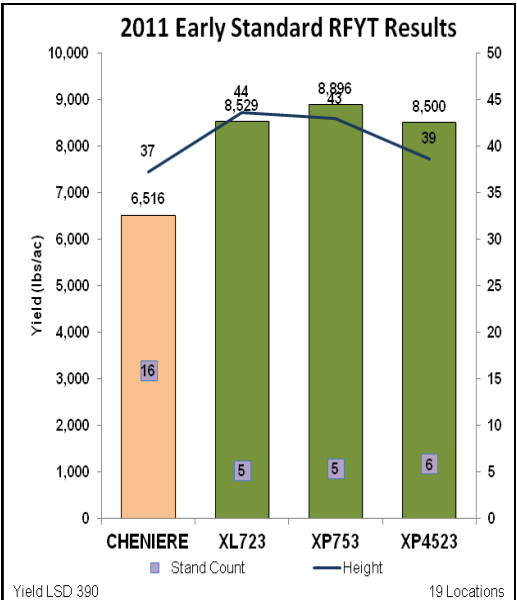
People Dedicated to the Field of Rice

Hybrid Advantages Above Historical Averages in 2011

Standard hybrids performed excellent in the non-CLEARFIELD RiceTec Farm-scale Yield Trials (RFYT) again in 2011 averaging statistically higher yields than the variety checks.

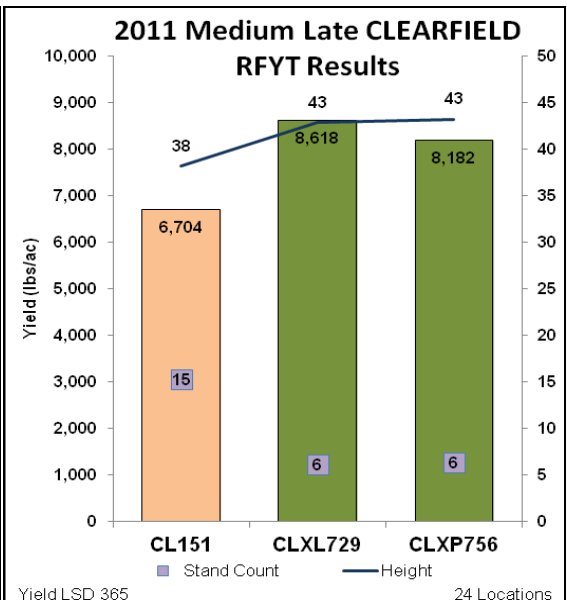
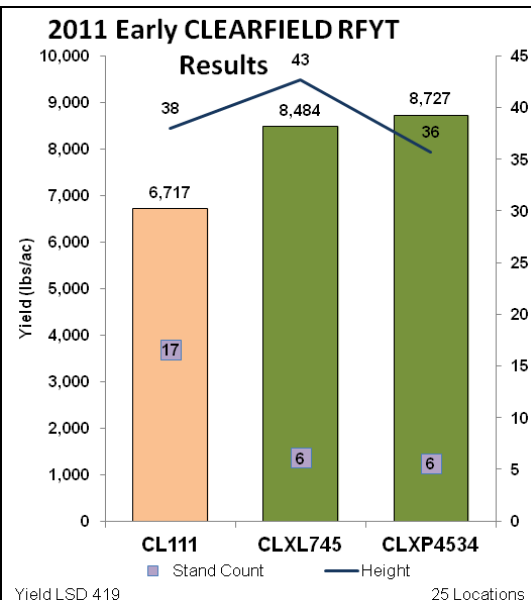
In the 19 Early RFYTs, the new release XP753 topped the trials averaging 37% higher yield than Cheniere followed by workhorse XL723 and the very early hybrid XP4523, both averaging 31% advantage over Cheniere.

As in the Standard RFYTs the CLEARFIELD hybrids performed excellent again in 2011 RFYTs averaging statistically higher yield than the variety checks.



In the 25 Early CLEARFIELD RFYTs market leader CL XL745 averaged 26% yield advantage over CL111 and the semi-dwarf, very early hybrid CL XP4534 averaged 30% higher yield, winning 100% of the comparisons.

In the 24 Medium Late CLEARFIELD RFYTs CL XL729 and CL XP756 averaged 29% and 22% yield advantage over CL151, respectively, while winning 100% of the comparisons.



•If you have not placed your 2012 seed order please do so now. Limited amounts of seed remains.

•Remember to check our website frequently for updates, information and details on programs.



Also available on our website: WWW.RICETEC.COM



Post Harvest

Hybrid Seeding Rate base recommendation targeted for 450,000 seeds per acre

Multi-year data indicate no significant reduction in hybrid performance with seeding rates as low as 400,000 seeds per acre. Therefore, in addition to moving the based recommendation to 450,000, the Stand Guarantee program has been amended to cover hybrid seeding rates down to 400,000 seeds per acre, assuming all other guidelines of the stand guarantee program are followed. The detailed Stand Guarantee program can be found at www.RiceTec.com or available from your local RiceTec representative. Based on quality of the 2012 seed crop a seeding rate of 450,000 seeds per acre or 10.3 seeds / square foot (approximately 23 lbs/ac) should result in very similar viable hybrid seeds planted as 500,000 seeds planted in previous years.

- 500,000 x 80% germ. x 97% purity = 8.9 viable seeds per square foot
- 450,000 x 90% germ. x 97% purity = 9.0 viable seeds per square foot

An opportunity for reduction in seed price while maintaining stand guarantee and hybrid performance potential is available, but seeding rate adjustments should be made based on field-specific situations.

RiceTec Hybrid Validation Trials Demonstrate Hybrid Advantages on Farm Scale

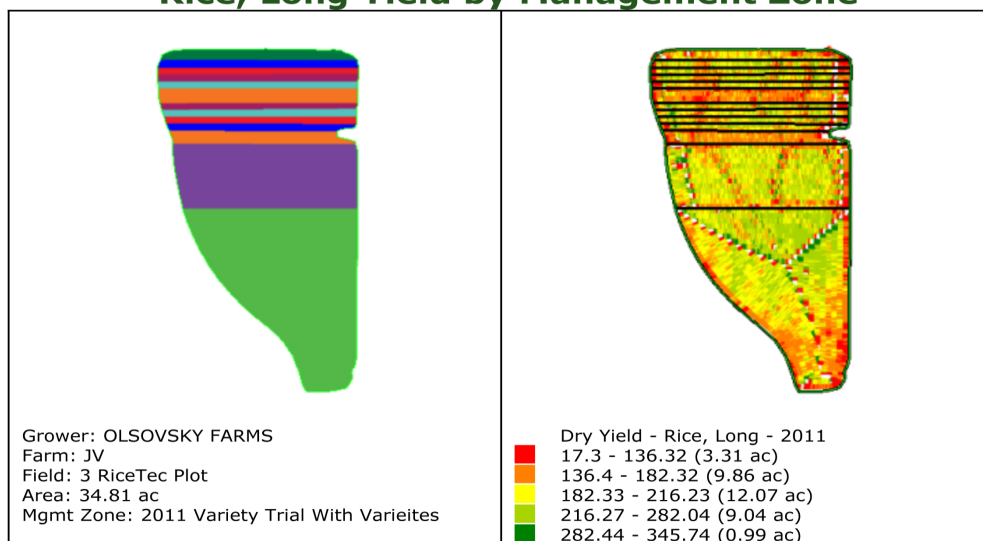
The concept of RiceTec Hybrid Validation Trials (RHVT) was introduced in 2010 to validate management recommendations and product performance. A RHVT is basically a RiceTec Farms scale Yield Trial (RFYT) with additional measures taken to confirm results, such as yield mapping.

The unbiased validation is accomplished by crop consultants tracking management practices and results with a RiceTec Technical Representative from planting to harvest. Also, in addition to weighing the grain harvested from each strip, yield monitors on the cooperators' combines are used to record differences in grain yields from each strip.

This validation demonstrates RiceTec's commitment to providing accurate and proven management practices.

The example is an illustration of the RHVT conducted on Jeff Olsovsky's farm in 2011. These results and other validation trials can be found on RiceTec's webpage at: www.RiceTec.com

Rice, Long Yield by Management Zone



Legend	Management Zone	Avg	Dry Yield		Avg Moisture	Total Bushels	Acres
			Min	Max			
	Big Block - Clearfield XL745	200.25	17.84	345.74	14.70 %	1,684.04	8.41
	Big Block - Clearfield XP 1	198.70	17.30	345.74	15.88 %	2,805.28	14.12
	Clearfield XP Hybrid 2	194.54	17.57	345.74	16.16 %	369.19	1.90
	Clearfield XL745 (300k)	193.91	17.96	345.74	16.64 %	327.03	1.69
	Clearfield XL745 (500k)	193.73	18.10	345.74	15.56 %	404.15	2.09
	Clearfield XP 1	192.45	20.74	345.74	14.60 %	338.10	1.76
	Top - Clearfield XL745	175.05	18.75	345.74	14.60 %	272.03	1.55
	CL111	159.37	21.34	345.74	16.17 %	596.42	3.74
	N/A	116.83	41.82	206.80	17.51 %	3.32	0.03
	All	192.73	17.30	345.74	15.76 %	6,799.56	35.28

RiceTec Hybrid Seed Supply Limited

As you are probably aware, CLEARFIELD XL745 is sold out, and CLEARFIELD XL729, XL723, XP753 and Hybrid Levee Brand are in very tight supply. The remaining supplies of some RiceTec hybrids are now on a **first come, first served** basis. Now is the time to call and place your RiceTec seed order for 2012. If you are waiting to place your order, seed may not be available if you wait much longer. Contact your local service partner or RiceTec representative today.

Post Harvest

CL XL729 Sets New Advantages Records in 2011

CL XL729 has performed outstanding historically, and in 2011, this workhorse hybrid increased those advantages. The head to head comparisons conducted in 2011 documented those advantages as shown below in the graphs.

- CL XL729 averaged 28% higher yield than CL151 in 2011 compared to 6 year average advantage of 24%
- CL XL729 averaged \$224 higher net revenue per acre in 2011 compared to 6 year average of \$183 per acre

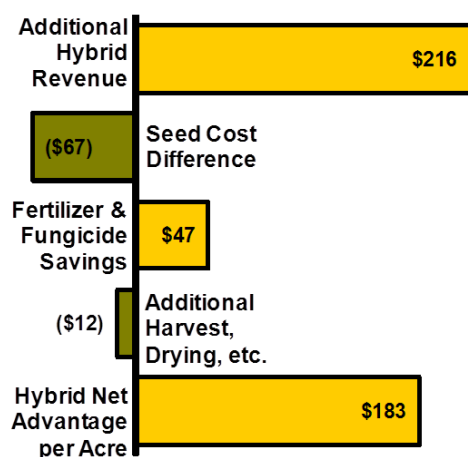
Multi-Year Commercial Strip Trials

CLEARFIELD XL729	vs.	CL151
Data Composition		CLEARFIELD XL729
Years of Data	6	Average Gain
Yield Comparisons	310	24%
Milling Comparisons	227	(1.1)

CLEARFIELD XL729	Yield	Gross Rev	Net Rev
Percent Wins	93%	89%	87%

	CLEARFIELD XL729	CL151
Grain Yield	9,057	7,330
Whole Milling	57.1	58.2
Total Milling	70.0	70.1
Freq. of Econ. Net Return	95%	86%

Cash price \$13.00 per cwt



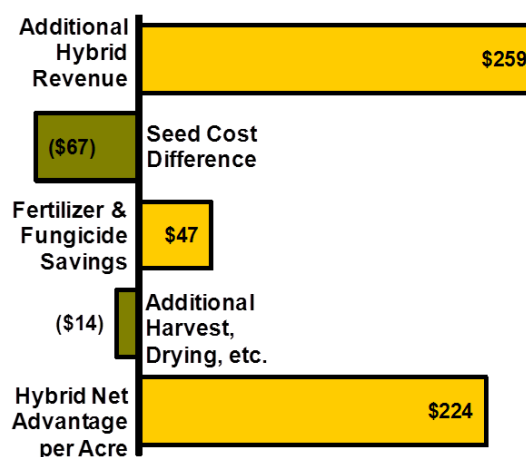
2011 Commercial Strip Trials

CLEARFIELD XL729	vs.	CL151
Data Composition		CLEARFIELD XL729
Years of Data	1	Average Gain
Yield Comparisons	23	28%
Milling Comparisons	21	0.3

CLEARFIELD XL729	Yield	Gross Rev	Net Rev
Percent Wins	100%	100%	100%

	CLEARFIELD XL729	CL151
Grain Yield	8,637	6,747
Whole Milling	56.9	56.6
Total Milling	69.3	68.8
Freq. of Econ. Net Return	95%	81%

Cash price \$13.00 per cwt



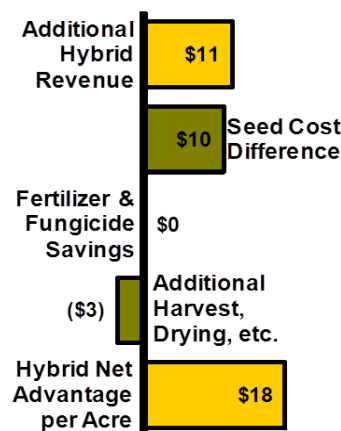
CL XL729 outperformed CL XL745 in our multi-location commercial strip trials averaging 3% higher yield and \$18 higher net revenue per acre than CL XL745 in 2011 direct comparisons.

CLEARFIELD XL729	vs.	CLEARFIELD XL745
Data Composition		CLEARFIELD XL729
Years of Data	1	Average Gain
Yield Comparisons	14	3%
Milling Comparisons	13	(0.7)

CLEARFIELD XL729	Yield	Gross Rev	Net Rev
Percent Wins	71%	54%	62%

	CLEARFIELD XL729	CLEARFIELD XL745
Grain Yield	8,662	8,404
Whole Milling	56.5	57.2
Total Milling	69.4	70.9
Freq. of Econ. Net Return	92%	92%

Cash price \$13.00 per cwt





RiceTec, Inc.

**P.O. Box 1305
1925 FM 2917
Alvin, TX 77511**

**15847 Highway 1
Harrisburg, AR 72432**

**877-580-7423
Fax 877-588-7423**

2011 Post Harvest RiceTec Newsletter

- **Hybrids Perform above Historical Averages in RiceTec Farm-scale Yield Trials**
- **Hybrid Seeding Rate base recommendation targeted for 450,000 seeds per acre**
- **RiceTec Hybrid Seed Supply Limited**
- **RiceTec Hybrid Validation Trials**
- **Head to Head Comparisons With CL XL729**

RiceTec Service Contacts

Technical Services

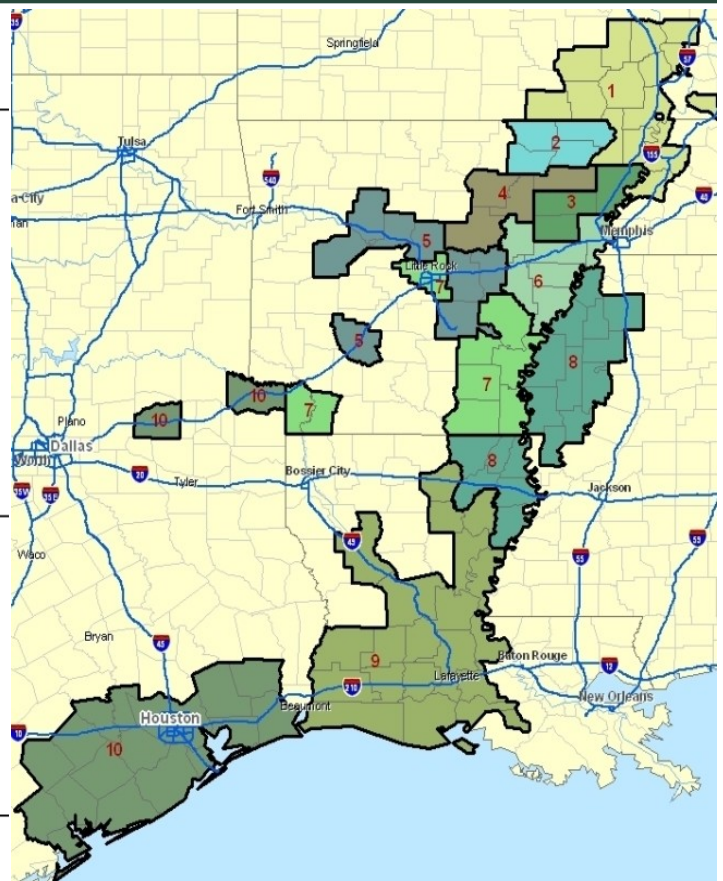
District 1	Barry Barnett	870-273-4988
District 2	Steven Gann	870-243-4703
District 3	Kurt Johns	870-243-4696
District 4	William Hutchens	870-273-9291
District 5	Whitney Jones	501-516-6904
District 6	Garrison Hardke	501-772-1715
District 7	Jeff Branson	870-578-8436
District 8	Jay Burchfield	662-402-2781
District 9	Cullen Minter	337-499-6498
District 10	Derrol Grymes	281-381-9371

Sales

Districts 1 - 2	DJ Shipman	870-273-9286
Districts 3 - 4	Brian Graf	870-243-2603
Districts 5 - 6	Jeff Reeves	870-919-6944
District 7	Wes Long	870-830-0160
District 8	Jeff Mosley	662-719-1034
District 9	Mike Worthington	337-263-4297
District 10	Mark Spilman	281-389-3527

Customer Service

Toll-free	Rebecca Wright	877-580-7423
-----------	----------------	--------------



Email addresses for RiceTec representatives available at www.RiceTec.com