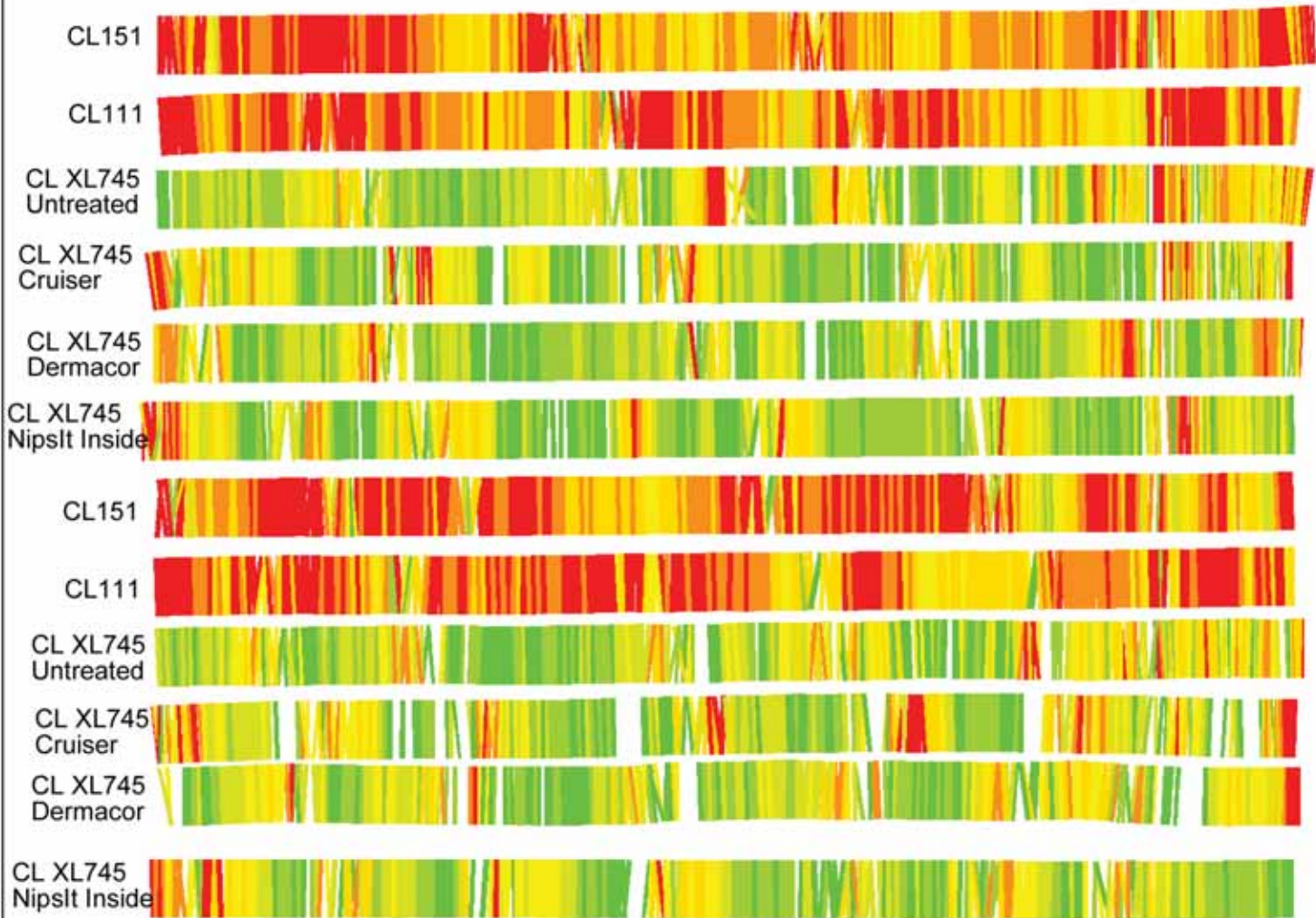


Grain Harvest 2011 - 120(RICE)



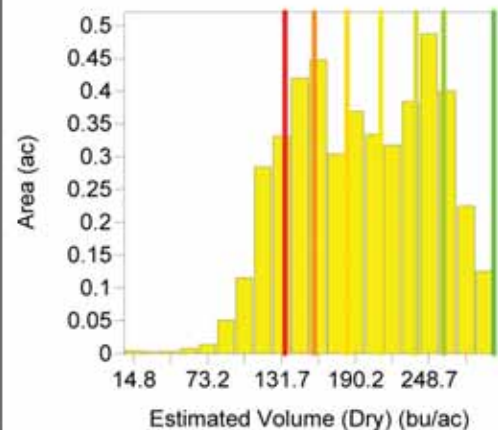
0 44ft

↑
N

Grower : SIMMONS
 Farm : SIMMONS and SON
 Field : 120
 Year : 2011
 Operation : Grain Harvest
 Crop / Product : RICE
 Op. Instance : Harvest - 1
 Area : 4.625 ac
 Avg. Yield : 199.83 bu/ac
 Avg. Moisture : 18.38 %

Estimated Volume (Dry) (bu/ac)

260.36 - 299.87	(0.63 ac)
238.61 - 260.36	(0.68 ac)
210.41 - 238.61	(0.66 ac)
183.73 - 210.41	(0.64 ac)
157.79 - 183.73	(0.65 ac)
134.63 - 157.79	(0.68 ac)
7.45 - 134.63	(0.69 ac)



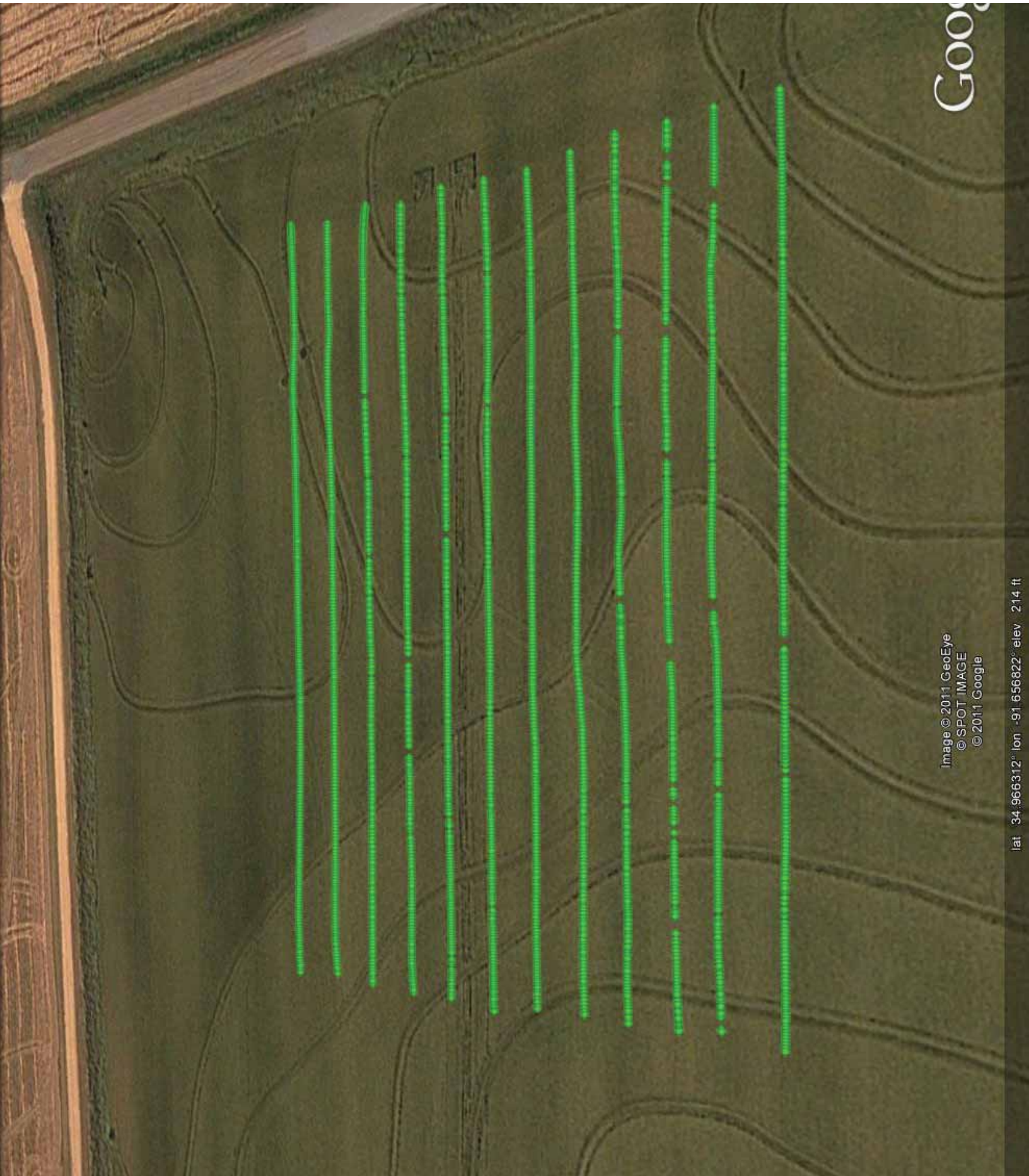


Image © 2011 GeoEye
© SPOT IMAGE
© 2011 Google

lat : 34.966312° lon : -91.656822° elev : 214 ft

Google



Experiment Summary

Farm Name	Experiment Type	Year	District	County	State	Tillage	Drill Type
-----------	-----------------	------	----------	--------	-------	---------	------------

SIMMONS VERIFICATION YIELD TEST 2011 5 Prairie AR Conventional Till GP 2020

Field No.:

Previous Crop & Year: Soybean - 2010

Soil Type: SILT LOAM

Treatment Summary

Treatment	Total Acres	Planned N Units (lbs/ac)	Actual N-P-K (lbs/ac)	Planting Date	Seeding Rate (lbs/ac)	Emerg. Date	Plants/ft ²	E. to Panicle Initiation	E. to 50% Heading	E. to 20% Moisture
NipsIt Inside CLEARFIELD XL745-1	2	0-0-0	0-0-0	4/18	24	4/28	7.4	55	91	137
Dermacor CLEARFIELD XL745-2	2	0-0-0	0-0-0	4/18	24	4/28	7	55	91	137
Cruiser CLEARFIELD XL745-3	2	0-0-0	0-0-0	4/18	24	4/28	7.7	55	91	137
Untreated CLEARFIELD XL745-4	2	0-0-0	0-0-0	4/18	24	4/28	7.7	55	91	137
CL111-5	2	0-0-0	0-0-0	4/18	65	4/28	21.7	55	91	137
CL151-6	2	0-0-0	0-0-0	4/18	44.5	4/28	21.3	55	93	140

Harvest Summary

Treatment	Moisture Percentage	Grain Yield (DRY LBS PER ACRE)	Height (inch)	Lodging Score	Milling%	
					Whole	Total
NipsIt Inside CLEARFIELD XL745-1	18.6	8,595	37	1	55	73
Dermacor CLEARFIELD XL745-2	17.3	8,685	37	1	54	73
Cruiser CLEARFIELD XL745-3	16.85	8,775	37	1	56	73
Untreated CLEARFIELD XL745-4	17.2	8,663	37	1	55	73
CL111-5	17.45	5,985	33	1	59	71
CL151-6	19.7	6,345	34	0.5	64	72

Main Crop Information

NipsIt Inside CLEARFIELD XL745-1	18.6	8,595	37	1	55	73
Dermacor CLEARFIELD XL745-2	17.3	8,685	37	1	54	73
Cruiser CLEARFIELD XL745-3	16.85	8,775	37	1	56	73
Untreated CLEARFIELD XL745-4	17.2	8,663	37	1	55	73
CL111-5	17.45	5,985	33	1	59	71
CL151-6	19.7	6,345	34	0.5	64	72